

Advanced Engineering Capabilities

Beams (Rectangular, IT, L shape)

Slabs (Hollow Core, Solid, DT)

Bi-linear deflection calculations

Customized allowable stresses in concrete

Time dependent (PCI) method of prestress loss calculation

Provision for stress reduction factor at jacking

Units in FPS System

PCPack Beam 2010-5

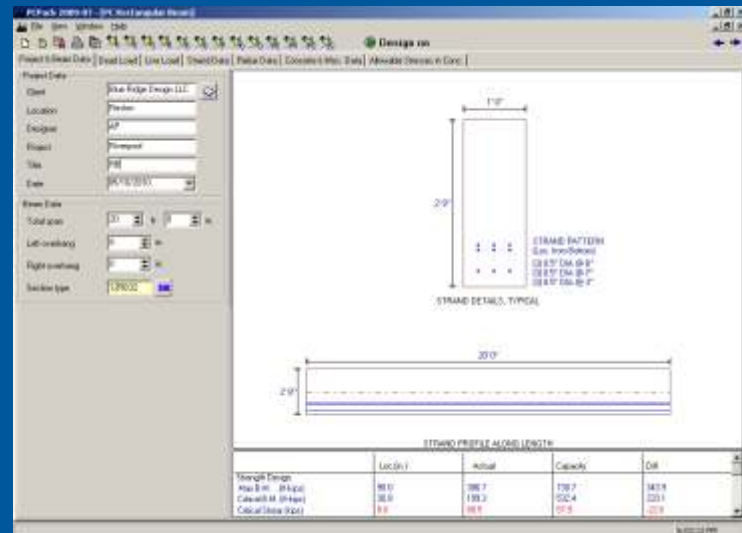
Efficiently Optimized Design for Reinforced
Prestressed / Precast Concrete Beams and Slab

Member Geometry

- Simply supported beams
- Cantilevers at one or both ends
- Rectangular beam
- Staircase
- Database support for standard shapes
- User defined size

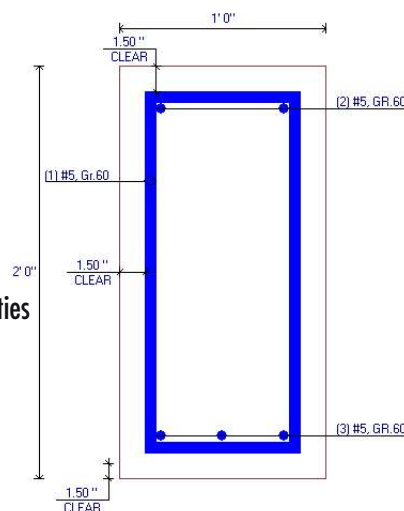
Loading Options

- Point loads
- Uniformly distributed loads
- Eccentric loads
- Dead and live load combination



Reinforcement Options

- Straight strand profile
- Single point & 2 point depressed profile
- Database support for strand properties
- Deflected & debonded tendons



User Friendly Features

- On-screen user manual and context sensitive help
- User friendly graphical interface
- User defined graphical cross section editor
- Alert for incorrect inputs
- Saves the latest design inputs as default
- Comprehensive summary reports
- Analysis result plot diagrams in terms of graphical output
- Export data to spreadsheet or MSWord

Design Codes

- ACI 318-08
- PCI Design Handbook 7th Edition