

### Advanced Engineering Capabilities

- Solid panels
- Sandwich panels
- Shear walls

### Loading Options

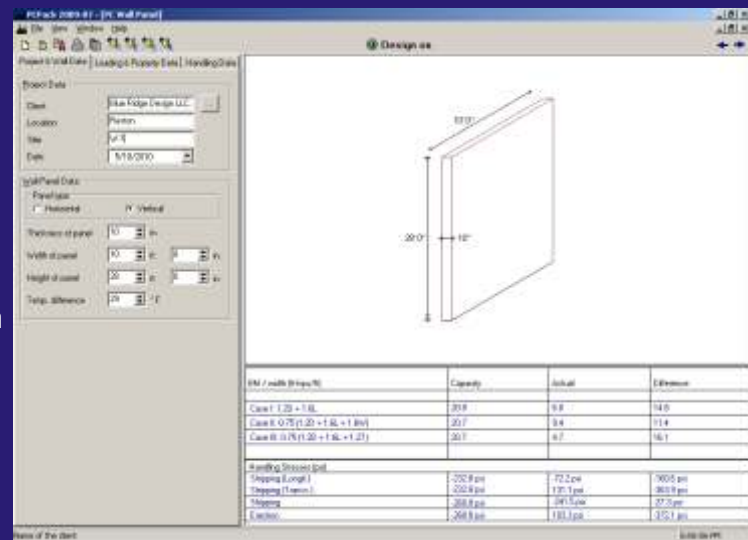
- Axial Dead loads, Axial Live loads
- Wind loads

### Design Codes

- ACI 318-08
- PCI Design Handbook 7th Edition

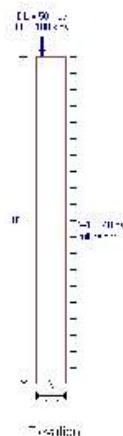
### Reinforcement Options

- Strands
- Rebars



### Member Geometry

- Solid panels
- Sandwich panels
- Shear walls



### User Friendly Features

- On-screen user manual and context
- Design tutorials and examples
- User friendly graphical interface
- User defined graphical cross section editor
- Alert for incorrect inputs
- Saves the latest design inputs as default
- Comprehensive summary reports
- Analysis result plot diagrams in terms of graphical output
- Export data to spreadsheet or MSWord